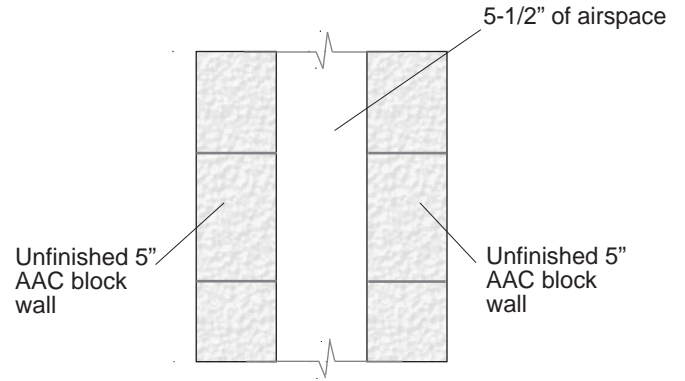
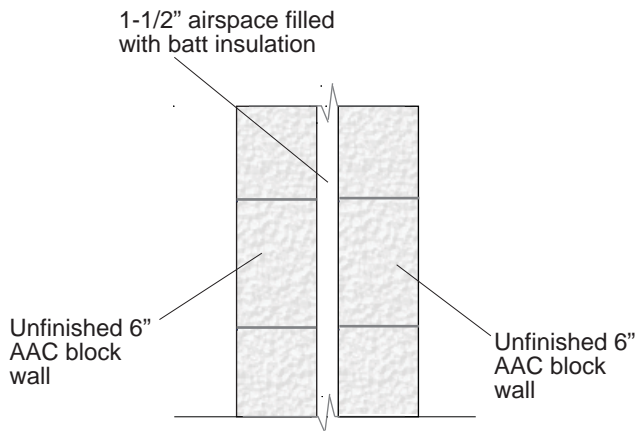


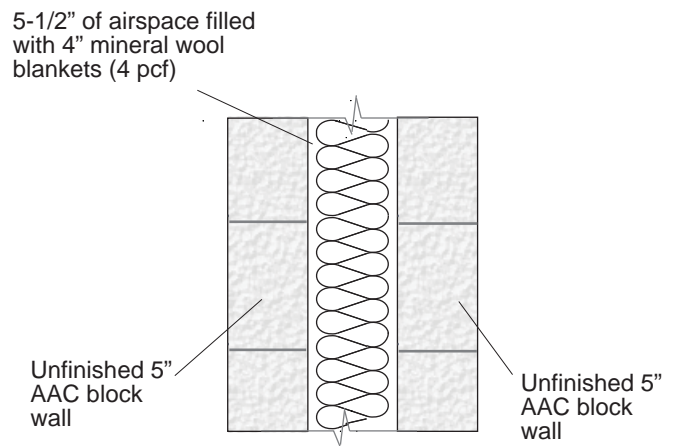
Strength Class	STC	OITC
AAC-4	65	53



Strength Class	STC	OITC
AAC-4	60	51



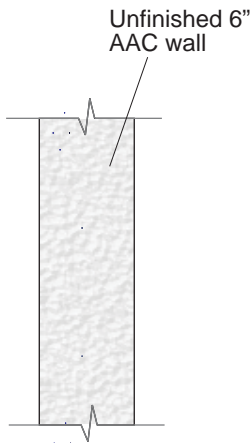
Strength Class	STC	OITC
AAC-4	65	-



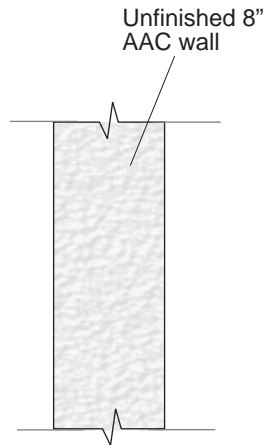
Strength Class	STC	OITC
AAC-4	68	54

STC: Sound Transmission Class, OITC: Outside / Inside Transmission Class
 Testing performed by DIN 4109 & Acoustic Systems, Inc., 415 East St. Elmo Rd., Austin, TX in accordance with ASTM E90, "Standard Method for Laboratory Measurement of Airborne Sound Transmission Loss of Building Partitions".

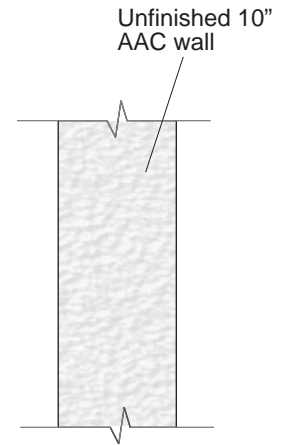
Acoustic Insulation



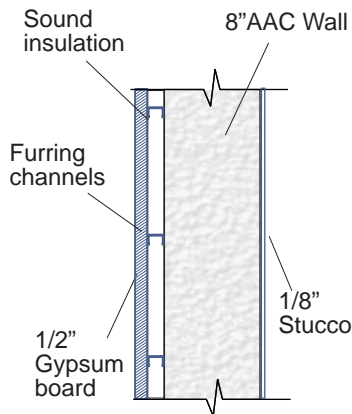
Strength Class	STC	OITC
AAC-2	44	38



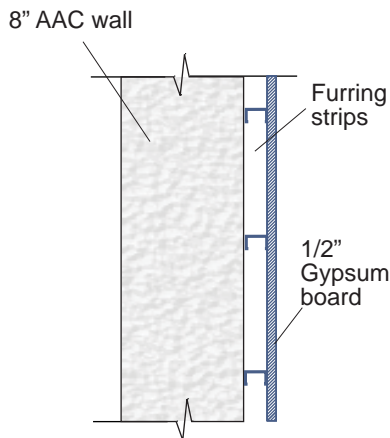
Strength Class	STC	OITC
AAC-2	47	41
AAC-4	50	44



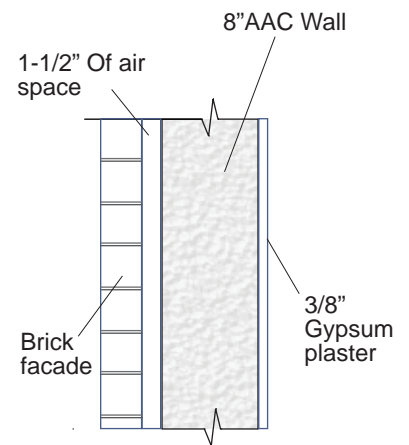
Strength Class	STC	OITC
AAC-2	50	44



Strength Class	STC	OITC
AAC-4	51	-



Strength Class	STC	OITC
AAC-2	49	40



Strength Class	STC	OITC
AAC-2	57	-

STC: Sound Transmission Class, OITC: Outside / Inside Transmission Class
 Testing performed by DIN 4109 & Acoustic Systems, Inc., 415 East St. Elmo Rd., Austin, TX in accordance with ASTM E90, "Standard Method for Laboratory Measurement of Airborne Sound Transmission Loss of Building Partitions".